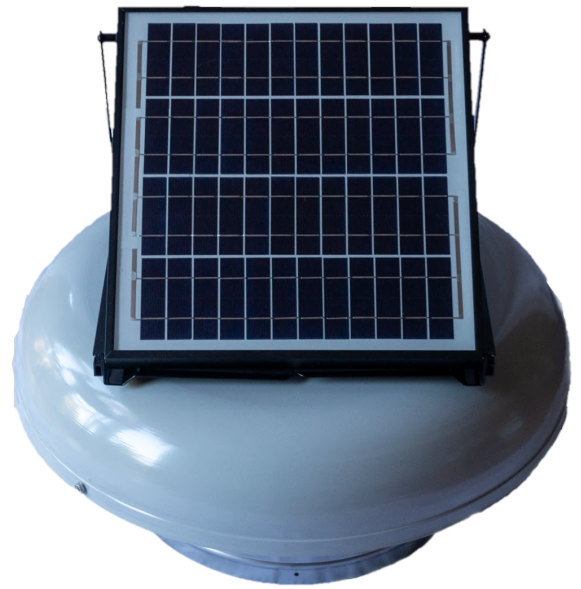


The SW-AU-R-15

SPECIFICATIONS

Airflow Capacity	1,200m ³ /h
PV Panel	High-Impact Resistant Polycrystalline 15 Watt Panel
Fan Motor	10-24 Volt DC Brushless Motor Double-Shielded Ball Bearings
Fan Decibel	<40dB(A) (at a metre away) Equivalent to a refrigerator hum
Fan Cap	Powder-coated aluminium
Body	Stainless Steel 304
Flashing	Length & Width: 575 x 600mm Height: 0.9mm Annealed uncoated aluminium
Coating	Electro Static UV resistant spray cured in high temperature drying process
Hardware	Stainless steel brackets, stainless steel fasteners & mesh
Dimensions	Diameter: 560mm Height: 260mm without PV / 296mm with PV Throat: 360mm
Packing Size	Length & Width: 625 x 590mm Height: 315mm
Packing Weight	8kg
Colour	Shale Grey fan cap All other parts uncoated (metal finish)
Options	Fixed Temp Thermostat (30°C) Adjustable Temp Thermostat (10-30°C) Constant Current Module 300mm Adaptor for ducting



The SW-AU-R-15 is a mid-range residential ventilator best suited for roof spaces of up to 120m².

This unit is ideal for extracting air from localised spaces such as:

- Smaller homes or units,
- Second floor of two-storey buildings,
- Small storefronts.



The SW-AU-R-28

SPECIFICATIONS

Airflow Capacity	1,700m ³ /h
PV Panel	High-Impact Resistant Polycrystalline 28 Watt Panel
Fan Motor	10-24 Volt DC Brushless Motor Double-Shielded Ball Bearings
Fan Decibel	<45dB(A) (at a metre away) Equivalent to a bird chirping
Fan Cap	Powder-coated aluminium
Body	Stainless Steel 304
Flashing	Length & Width: 575 x 600mm Height: 0.9mm Annealed uncoated aluminium
Coating	Electro Static UV resistant spray cured in high temperature drying process
Hardware	Stainless steel brackets, stainless steel fasteners & mesh
Dimensions	Diameter: 560mm Height: 260mm without PV / 296mm with PV Throat: 360mm
Packing Size	Length & Width: 625 x 590mm Height: 315mm
Packing Weight	9kg
Colour	Shale Grey fan cap All other parts uncoated (metal finish)
Options	Fixed Temp Thermostat (30°C) Adjustable Temp Thermostat (10-30°C) Constant Current Module 300mm Adaptor for ducting



The SW-AU-R-28 is a larger mid-range roof ventilator capable of extracting air from roof spaces of up to 180m².

This unit is ideal for extracting air from localised spaces such as:

- Larger homes,
- Home interiors with ceiling vents,
- Businesses with service floors

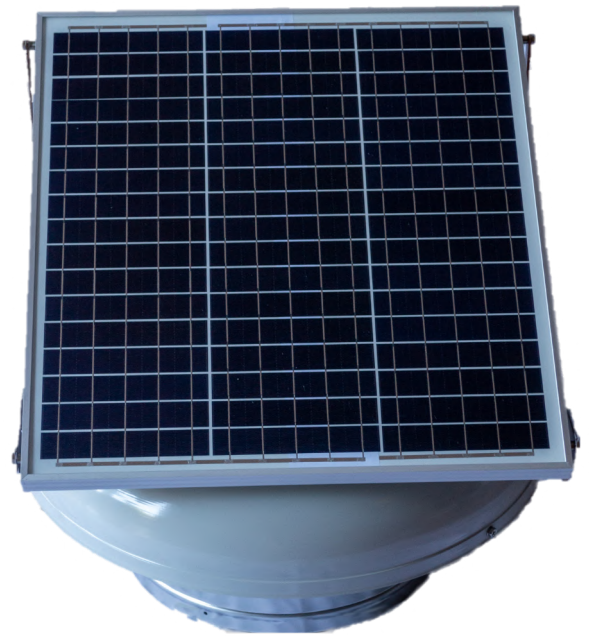
The SW-AU-R-28 is an ideal mid-range unit capable of extracting large volumes of air throughout the day.



The SW-AU-R-40

SPECIFICATIONS

Airflow Capacity	2,300m ³ /h
PV Panel	High-Impact Resistant Polycrystalline 40 Watt Panel
Fan Motor	10-24 Volt DC Brushless Motor Double-Shielded Ball Bearings
Fan Decibel	<60dB(A) (at a metre away) Equivalent to an air conditioner at 100 feet
Fan Cap	Powder-coated aluminium
Body	Stainless Steel 304
Flashing	Length & Width: 575 x 600mm Height: 0.9mm Annealed uncoated aluminium
Coating	Electro Static UV resistant spray cured in high temperature drying process
Hardware	Stainless steel brackets, stainless steel fasteners & mesh
Dimensions	Diameter: 560mm Height: 260mm without PV / 296mm with PV Throat: 360mm
Packing Size	Length & Width: 625 x 590mm Height: 315mm
Packing Weight	10kg
Colour	Shale Grey fan cap All other parts uncoated (metal finish)
Options	Fixed Temp Thermostat (30°C) Adjustable Temp Thermostat (10-30°C) Constant Current Module 300mm Adaptor for ducting



The SW-AU-R-40 is our largest residential roof ventilator and is capable of extracting air from roof spaces of up to 250m².

This unit is ideal for extracting air from localized spaces such as:

- Large homes,
- Offices,
- Stables.

The SW-AU-R-40 is useful in both commercial and residential properties. If you need a powerful ventilator that you can rely on in the summer; accept no substitute.

